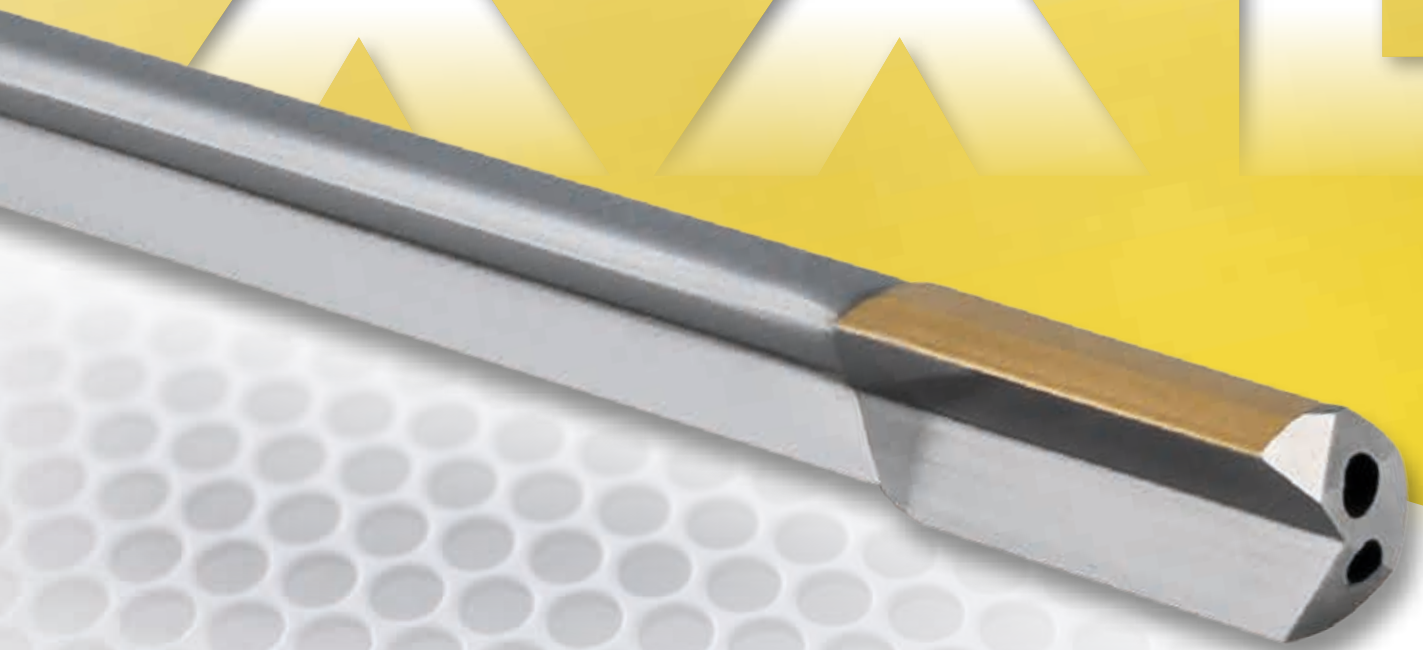


# GÜHRING

# XXL



NEW XXL STOCK PROGRAMME

▶ **600 mm** ▶ **1,000 mm** ▶ **1,400 mm** ▶ **1,800 mm**  
▶ 800 mm ▶ 1,200 mm ▶ 1,600 mm ▶ 2,000 mm

**Single-Fluted Gun Drills EB 80 XXL**

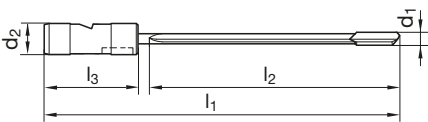
GÜHRING – YOUR WORLDWIDE PARTNER

**EB 80 XXL single-fluted gun drills**



<b>P</b>	•	bright finish flute • head form G • driver for deep drilling machines
<b>M</b>	○	
<b>K</b>	•	
<b>N</b>	•	
<b>S</b>	○	
<b>H</b>	○	

Tool material	<b>Carbide tipped</b>			
Surface	<b>S</b>			
Clamping sleeve	TBM-SEH			
Total length l1	600 mm	800 mm	1,000 mm	1,200 mm
Flute length l2	500 mm	700 mm	900 mm	1,100 mm
Shank length l3	70 mm			



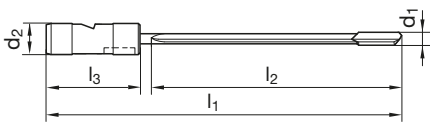
Article no.	<b>5688</b>	<b>5691</b>	<b>5164</b>	<b>5692</b>
-------------	-------------	-------------	-------------	-------------

Code no./d1 h5	d1 h5	d2 h6	Availability			
mm	inch	mm				
3.000		25.000	•	•	•	•
4.000		25.000	•	•	•	•
5.000		25.000	•	•	•	•
5.500		25.000				
6.000		25.000	•	•	•	•
6.500		25.000				
7.000		25.000	•	•	•	•
7.500		25.000				
8.000		25.000	•	•	•	•
9.000		25.000	•	•	•	•
9.500		25.000				
10.000		25.000	•	•	•	•
11.000		25.000	•	•	•	•
11.500		25.000	•	•	•	•
12.000		25.000	•	•	•	•
13.000		25.000	•	•	•	•
14.000		25.000	•	•	•	•
15.000		25.000	•	•	•	•
16.000		25.000	•	•	•	•
17.000		25.000	•	•	•	•
18.000		25.000	•	•	•	•
19.000		25.000	•	•	•	•
20.000		25.000	•	•	•	•
21.000		25.000	•	•	•	•
22.000		25.000	•	•	•	•
23.000		25.000	•	•	•	•
24.000		25.000	•	•	•	•
25.000	63/64	25.000	•	•	•	•
26.000		25.000				
27.000		25.000				
28.000		25.000				
29.000		25.000				
30.000		25.000				
31.000		25.000				
32.000		25.000				

EB 80 XXL single-fluted gun drills



<b>P</b>	•	bright finish flute • head form G • driver for deep drilling machines
<b>M</b>	○	
<b>K</b>	•	
<b>N</b>	•	
<b>S</b>	○	
<b>H</b>	○	



Tool material	Carbide tipped			
Surface	S			
Clamping sleeve	TBM-SEH			
Total length l1	1,400 mm	1,600 mm	1,800 mm	2,000 mm
Flute length l2	1,300 mm	1,500 mm	1,700 mm*	1,900 mm**
Shank length l3	70 mm			



Article no.	5681	5693	5682	5694
-------------	------	------	------	------

Code no./d1 h5	d1 h5	d2 h6	Availability			
mm	inch	mm				
3.000		25.000	•	•	•	•
4.000		25.000	•	•	•	•
5.000		25.000		•		
5.500		25.000		•		
6.000		25.000	•	•	•	•
6.500		25.000		•		
7.000		25.000	•	•	•	•
7.500		25.000		•		
8.000		25.000	•	•	•	•
9.000		25.000	•	•	•	•
9.500		25.000		•		
10.000		25.000	•	•	•	•
11.000		25.000	•	•	•	•
11.500		25.000	•	•	•	•
12.000		25.000	•	•	•	•
13.000		25.000	•	•	•	•
14.000		25.000	•	•	•	•
15.000		25.000	•	•	•	•
16.000		25.000	•	•	•	•
17.000		25.000	•	•	•	•
18.000		25.000	•	•	•	•
19.000		25.000	•	•	•	•
20.000		25.000	•	•	•	•
21.000		25.000	•	•	•	•
22.000		25.000	•	•	•	•
23.000		25.000	•	•	•	•
24.000		25.000	•	•	•	•
25.000	63/64	25.000	•	•	•	•
26.000		25.000			•	•
27.000		25.000			•	•
28.000		25.000			•	•
29.000		25.000			•	•
30.000		25.000			•	•
31.000		25.000			•	•
32.000		25.000			•	•

\* from Ø 26.000 mm flute length 1,695 mm  
\*\* from Ø 26.000 mm flute length 1,895 mm

## EB 80 XXL

- up to 1,500x quicker machining times than with conventional spiral deep hole drills
- ideal for deep drilling machines
- optimal use in die and mould industry
- polished long flute for the application in steel and non-ferrous metals with excellent chip control and optimal wear protection
- TiN coating for long tool life
- including clamping sleeve for deep drilling machines



**All gun drills must have support for the pilot hole.  
Gun drills must never operate at full speed without support in the machine shop.**



# GÜHRING

P.O. Box 100247 • 72423 Albstadt  
Herderstrasse 50-54 • 72458 Albstadt  
Germany

T +49 74 31 17-0  
F +49 74 31 17-21 279

info@guehring.de  
www.guehring.com

No liability can be accepted for printing errors or technical changes of any kind.  
Our Conditions of Sale and Terms of Payment apply. Available on request.